



**PERTH
SOUTH WEST**
Metropolitan Alliance

Unlocking Perth's South West

Advocacy Priorities 2025



Acknowledgement of Country

We would like to acknowledge the Noongar People as traditional custodians of the land and waters of the Region and we also wish to acknowledge and respect their continuing culture and contribution they make to the life of this Region.

Contents

Introduction

3

The time is now

4

A vision for the future

6

Housing

8

Road and Freight Infrastructure

10

Liveability and Connectivity

12

Blue Economy

14

Conclusion

15

Introduction

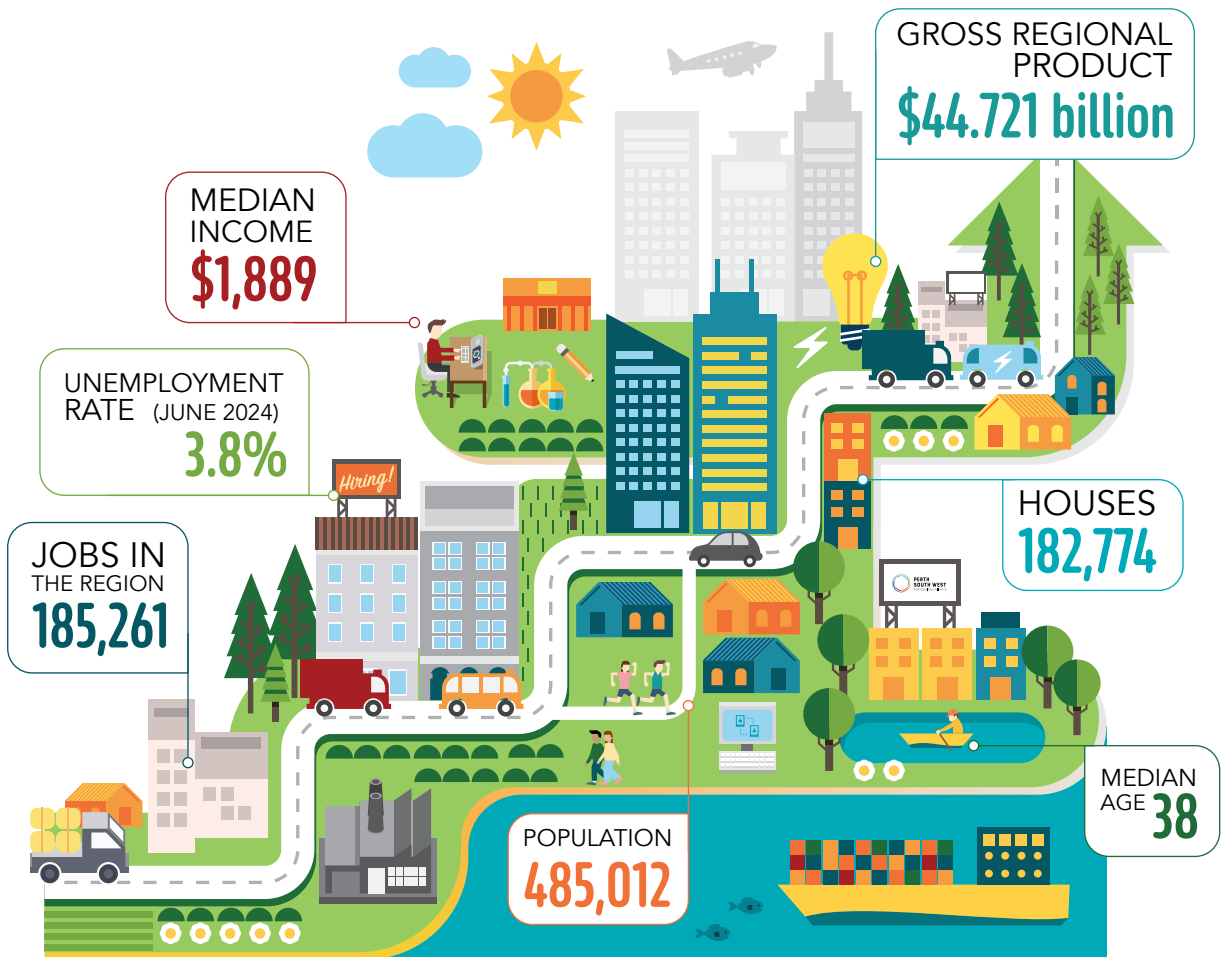
The Perth South West Metropolitan Alliance (the Alliance) is a long-standing grouping of six local governments in Perth's South West region.

Since 1983, the local councils of Fremantle, East Fremantle, Melville, Cockburn, Kwinana, and Rockingham have collaborated on projects impacting their combined communities.

The region represents nearly half a million residents and hosts some of the most significant infrastructure in Western Australia, including:

- Major shopping destinations in Booragoon, Fremantle, Cockburn, and Rockingham
- Significant defence infrastructure, including HMAS Stirling, Leeuwin Barracks, and the Australian Marine Complex
- The state's premier industrial estates: Kwinana Industrial Area, Rockingham Industrial Zone, and Latitude 32
- Western Australia's Container Port in Fremantle and the Kwinana Bulk Terminal and Jetty
- A range of hospitals, two universities, and leading TAFE institutions

With these assets at our doorstep, the region is set to continue spearheading Western Australia's economic growth over the coming decades.



The time is now

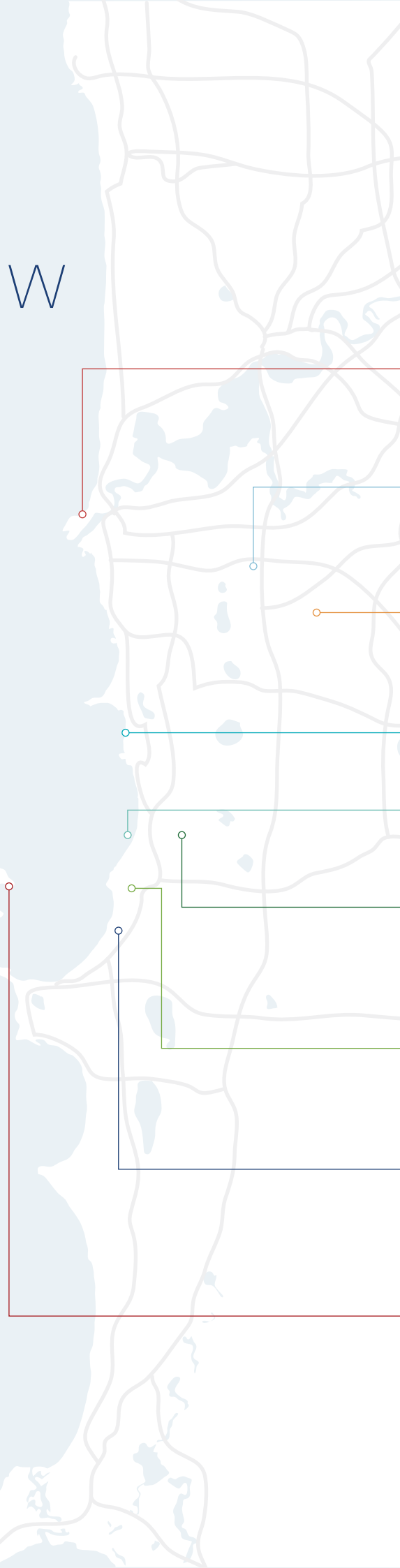
While the region has played a key role in supporting Western Australia's economy, Perth South West is on the brink of a surge in investments and developments that will make it the most significant development site of any urban area in the nation.

In the coming years, we will witness the convergence of several megaprojects, including:

- AUKUS
- Westport
- Murdoch Women's and Babies Hospital
- Future of Fremantle
- Development of the Global Advanced Industries Hub
- Continuous shipbuilding at the Australian Marine Complex
- Significant residential and commercial development

With such a range of large-scale projects, the region's prominence will grow at state, national, and international levels, establishing Perth South West as Australia's trading and naval gateway to the world.

This document outlines the priorities required to ensure our region realises the potential of the planned projects and guarantees that our communities are supported and uplifted by these investments.



FUTURE OF
FREMANTLE

NEW WOMEN
& BABIES HOSPITAL

JANDAKOT
AIRPORT

AUSTRALIAN
MARINE COMPLEX

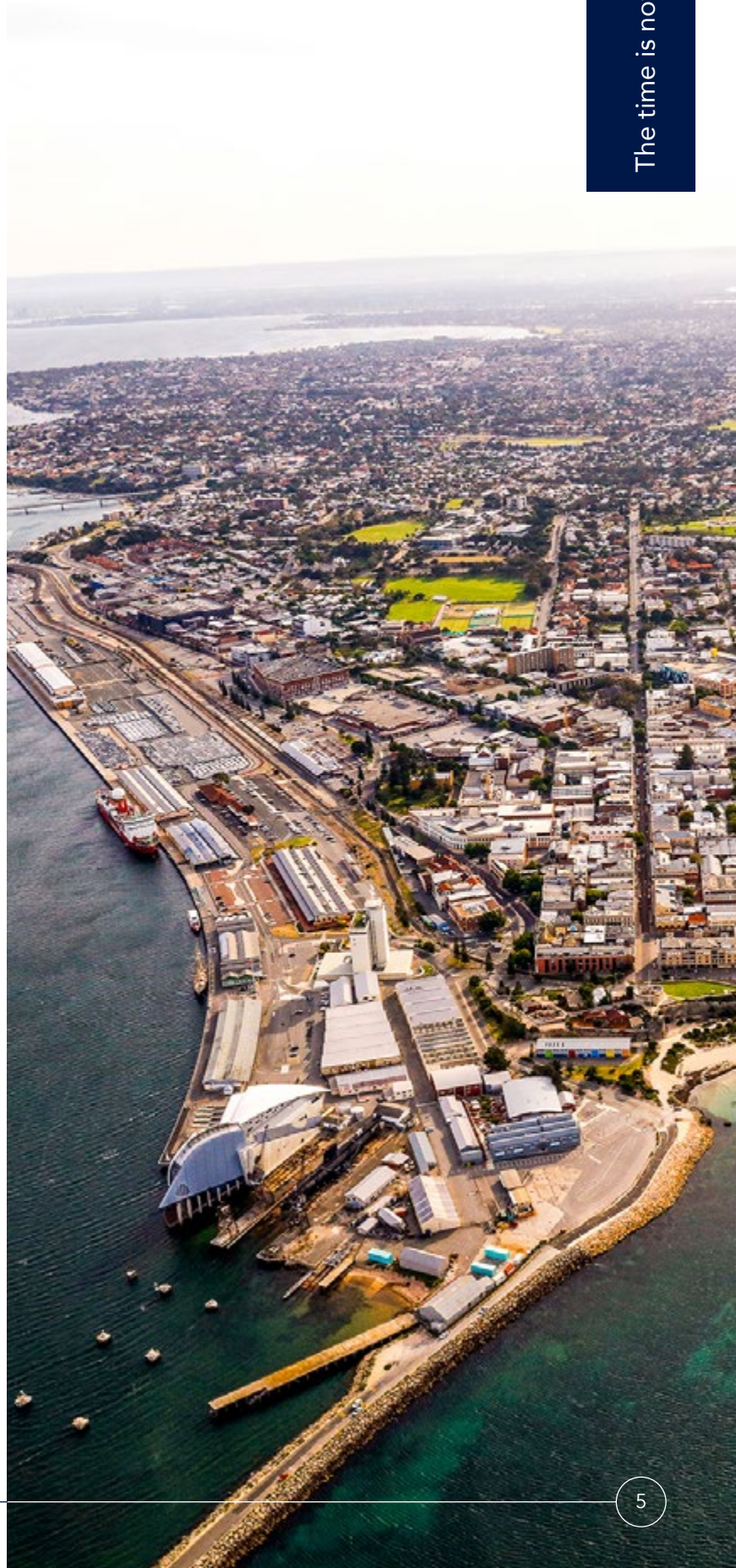
WESTPORT

LATITUDE 32

KWINANA
INDUSTRIAL AREA

ROCKINGHAM
INDUSTRY ZONE

HMAS STIRLING
AUKUS



A vision for the future

In two decades, following unprecedented investment, we envision a region where the community's current lifestyle has not only been maintained, but enhanced.

This vision includes a wealth of new opportunities for our youth, with high-paying and high-tech jobs. New suburbs will be designed with sustainable principles, while redeveloped urban centres will offer a variety of jobs and housing options, all connected by active and public transport networks.

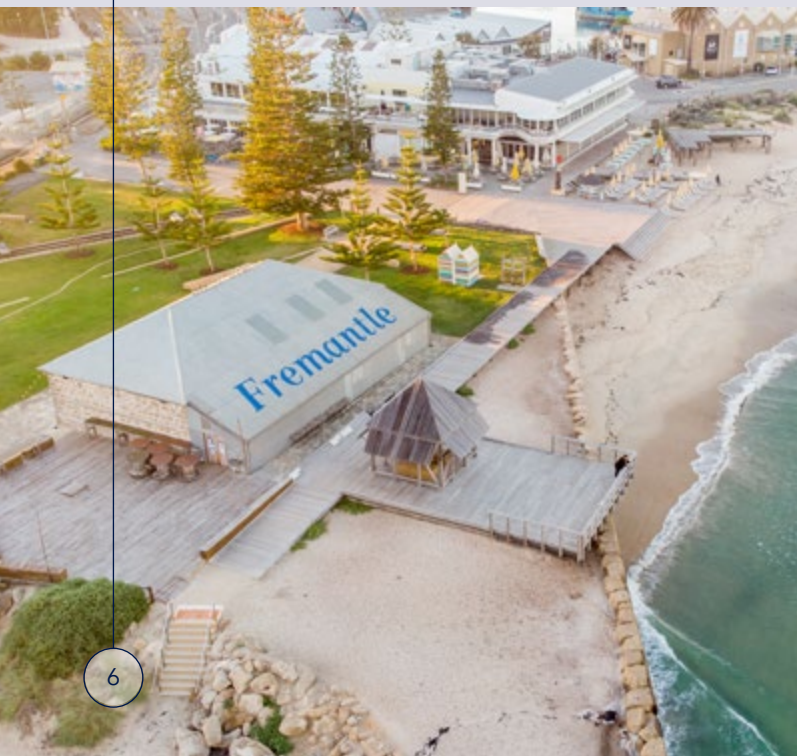
Our freight rail and road infrastructure will be robust and capable, developed to meet industry needs now and into the future.

Our educational facilities will be state-of-the-art, providing world-class learning opportunities for all residents. Our communities will be actively engaged in these projects, contributing to their success and ensuring they meet the needs of local people.

Most importantly, these projects will be coordinated to prevent competition for resources, ensuring sufficient housing in the region and environmental regeneration in areas that have experienced intense development.

Central to achieving this vision is the recognition that effective coordination of these opportunities is crucial for ensuring these investments have a positive impact.

Success will be realised when all tiers of government understand that for projects like Westport and AUKUS to succeed, the region itself must thrive first.





In order to achieve this, we are asking government for:

- An Infrastructure Partnership Agreement that encompasses all three tiers of government to schedule, fund and deliver the infrastructure planned in a coordinated manner that maximises uplift in our communities, environmental and local economy
- Establishing a State Government Parliamentary Secretary for the Perth South West Region to work across portfolios to coordinate efforts across government departments, portfolios and agencies.



Housing

The Perth South West region is facing a significant housing challenge. With no simple measures to fix the demand and affordability issues, we need a collective approach to help build investor confidence and plan for even greater housing demand.

The AUKUS agreement is bringing more naval personnel to our area, and while there are plans to build housing for them, the real issue is the increased demand from the secondary employment this influx creates. More jobs in the area mean more people needing places to live, adding pressure to our already strained housing market.

We need the help from the Commonwealth to ensure the development sector understands the housing challenges that AUKUS will bring, and the support to fund the large scale infrastructure that demonstrates to the private sector the certainty of the incoming population.

By investing in infrastructure such as road upgrades and train stations, we can help to open up new areas of development. Infill infrastructure funds have proved successful in de-risking major housing projects, with a continued focus on METRONET stations and existing urban centres to upgrade essential services likely to continue to have strong positive impacts.

Working with local governments to unlock underutilised government land parcels will help bring land in strategic locations to market, where alternative development approaches could be trialled to bring more diverse accommodation options to the region.





Specifically, we are asking for:

- Commitment to expanding METRONET to include the construction of Karnup Station
- Ongoing infrastructure investment fund to upgrade service infrastructure for infill housing
- State Government commitment to help bring underutilised land to market, factoring in social returns, rather than economic outcomes alone
- Commonwealth, State and Local Governments to work together on a study to measure the impacts of planned defence programs on the local housing market



Road and Freight Infrastructure

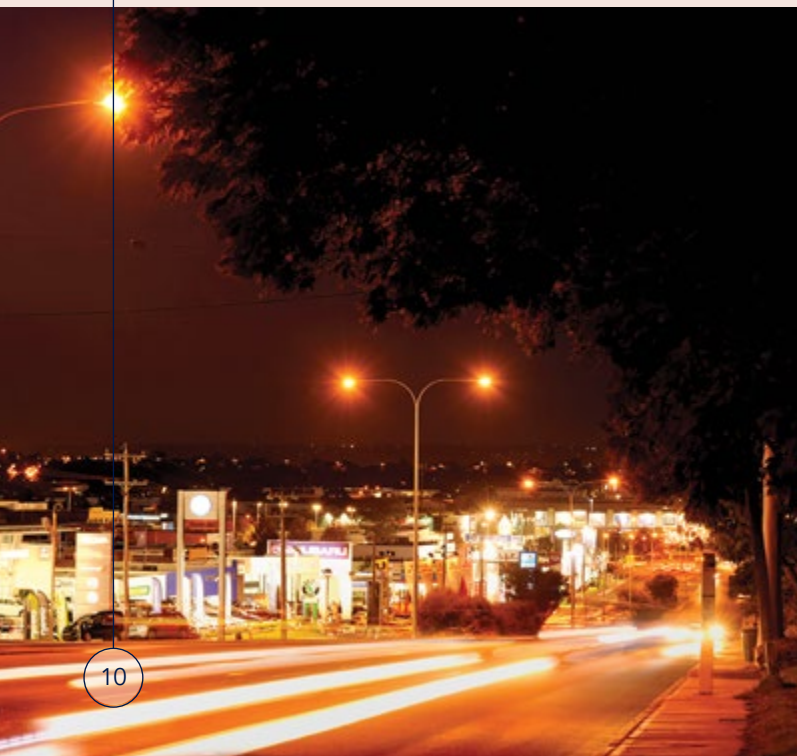
The Perth South West Metropolitan region is a vital hub for Perth's port infrastructure and heavy industry, making a contemporary and safe freight network essential to support the local and national economy.

While the industrial road network has served the region well since its development in the 1950s, it now requires significant upgrades. Key road intersections need improvement, and staged widening of roads is necessary to ensure the industrial area remains efficient, ahead of the development of the Westport project.

Other key linkages are needed to ensure that Perth has an efficient freight network that meets the long-term needs of the region and prioritises safety for our communities. Plans to run Perth's freight along an already congested freeway system for the first decades of Westport's operation create an unsafe and unreasonable approach, failing to open up key development ready industrial estates in the south eastern corridor.

The AUKUS agreement is increasing the demand for efficient transportation of people and freight between key sites such as Garden Island and Henderson. Expanding capacity in this network is crucial. With Australia's largest naval base accessed through a residential suburban road network, it's essential to find a long-term solution. The Commonwealth must commit to funding the necessary road upgrades to meet its strategic aspirations for the region.

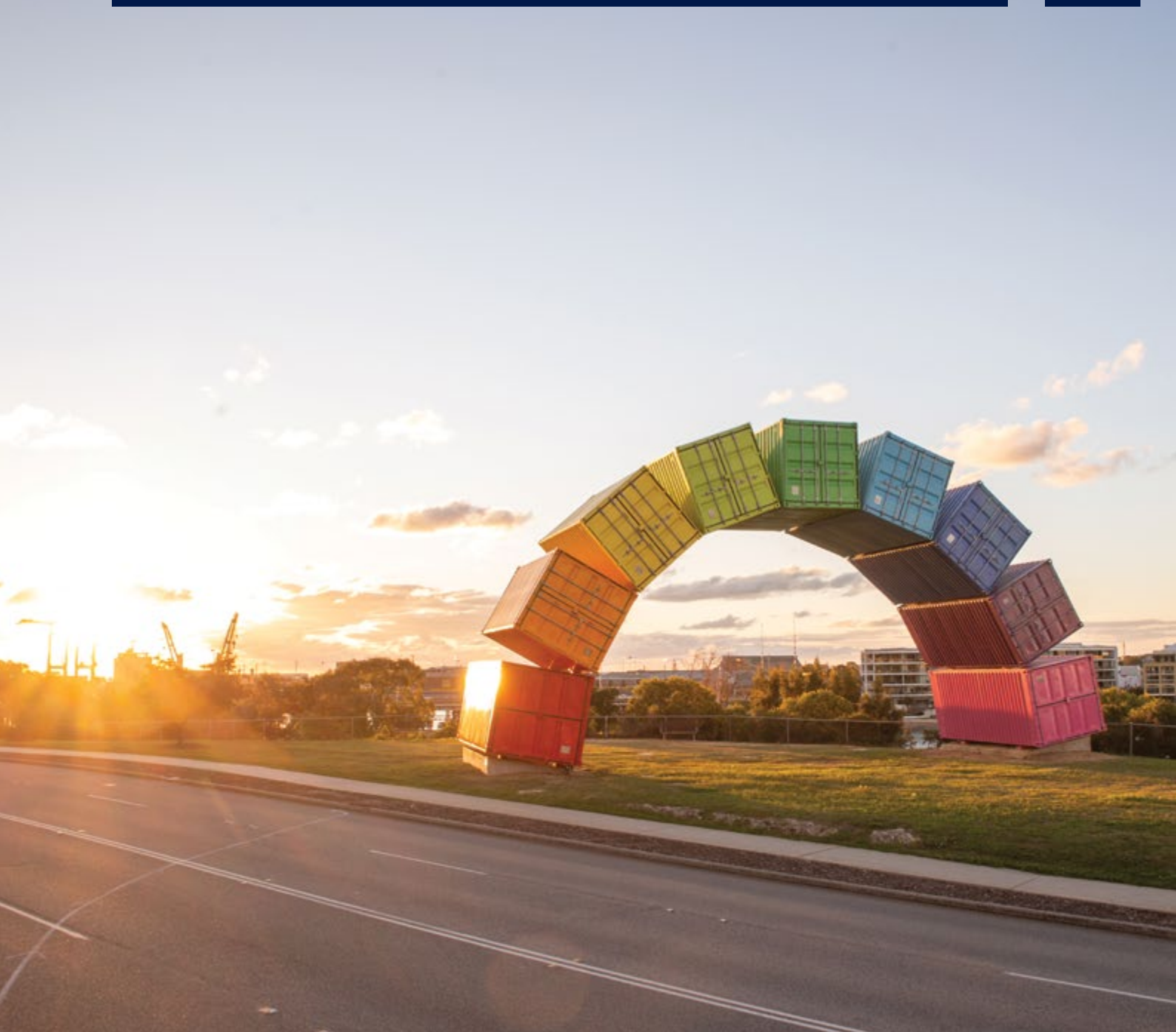
The Kwinana Freeway faces daily congestion and is currently operating well beyond its capacity. While Mitchell Freeway saw widening projects funded at much lower volumes, the Kwinana Freeway widening is presently unfunded and overdue. It is essential to secure funding to fix this broken road network and support the growing demands of the region.





Specifically, we are asking for:

- The immediate widening of Kwinana Freeway from Russell Road to Safety Bay Road
- State Government commitment to manage key regional freight linkages through Main Roads WA
- Construction of Rowley Road West to open up access into Latitude 32 and the Australian Marine Complex
- Upgrade of Rockingham Road and Stock Roads, including key intersections such as Mason Road and Russell Road
- Commitment to the construction of Anketell Road East connection to Tonkin Highway at the opening of Westport
- Commitment from the Commonwealth to fund a long-term access road to Garden Island



Liveability and Connectivity

Our region is already known for its high quality of life, offering a vibrant and liveable environment for residents. With the forthcoming infrastructure investments and the intensification of our local economy, it is crucial to maintain and enhance this quality of life.

As we embrace growth and development, we must ensure that our community experiences meaningful social uplift, benefiting from the opportunities these changes will bring.

To support this vision, we must begin planning today for the transport infrastructure that will be required in the future. This proactive approach will ensure that our region remains well-connected and accessible, supporting our residents' needs and aspirations.

Major projects such as AUKUS, the Future of Fremantle, and Westport will position our region as a focal point for international visitors. This presents a unique opportunity to showcase our community on the world stage, drawing visitors and investment.

With significant change to our region over the coming decades, it is imperative that the State and Federal Governments recognise the importance of maintaining a positive social licence with our community as we support your national endeavours.



Specifically, we are asking for:

- Funding to improve visitor access to the Murdoch Health and Knowledge Precinct through examining road design and prioritising public transport and pedestrian linkages
- Funding for the Catalpa Bike Path, a coastal pathway connecting Fremantle and Rockingham
- Establish a pilot Defence Community Infrastructure Fund to mitigate the impact of increased personnel in the region and support communities in accessing opportunities from AUKUS
- Develop an agreed set of broad technical specifications to allow planning for a future METRONET urban transit system to link major centres not currently served by rail
- Funding for a new Perth tourism strategy that targets non-traditional markets, such as industrial and medical tourism, and integrates lesser-known areas alongside traditional attractions



Blue Economy

The Blue Economy, encompassing the sustainable use of our coastal resources for economic growth, improved livelihoods, and jobs, is a natural fit for our region. With access to some of Australia's most productive coastline, our region is already synonymous with maritime excellence, innovation, and diverse economic activities.

With established sectors in defence, tourism, and shipbuilding, it is essential that new developments along our already busy coastline do not jeopardise existing industry and community enjoyment. This can be achieved through careful planning and the development of new adjacent industrial estates.

To stay at the forefront of naval architecture and shipbuilding, and to pioneer new methods for regenerating marine environments, we need funding for research and development institutions based in our region. Our universities and TAFEs must offer the right programs and deliver cutting-edge research to protect and maintain our vulnerable environment and ensure the resilience of our river systems and coastal ecosystems.

With defence already an economic driver, it is important to measure its impact on our local economy and collaborate on research studies that analyse economic impacts and identify barriers to further economic return.

Through strategic planning and investment, we can ensure the Blue Economy becomes a driving force for sustainable prosperity in our region.

Specifically, we are asking for:

- Climate adaptation funding to support the regeneration of river and coastal environments
- Funding to establish Blue Economy hubs for collaboration among established businesses, start-ups, and researchers
- Support for the Alliance to partner with economists to assess the current impact of defence on our community and identify policy changes to enhance opportunities
- Engagement with the existing business ecosystem to ensure that decisions regarding future dry docks and depot-level maintenance do not negatively affect current operators



Conclusion

The Perth South West region stands as Australia’s home of AUKUS, a partnership that necessitates an unparalleled uplift in industry, infrastructure, and people. For our region to thrive alongside AUKUS, we must see a similar uplift and investment in our communities.

As we anticipate tens of billions of dollars in infrastructure development over the coming years, a long-term binding commitment is essential between all three tiers of government. This commitment should focus on scheduling and delivering projects and developing new communities in a manner that does not overwhelm our housing market, strain our workforce, or damage our environment. Most of all, it needs to demonstrate to the community that the inconveniences of construction and the impacts of change are part of a bigger picture, leading to new and better opportunities for decades to come.

The next twenty years promise tremendous job creation and investment in our region. However, the extent to which this will be positive hinges on our ability to plan and deliver these projects in a way that builds capacity and opportunities for our residents.

By working together, we can ensure that Perth South West emerges stronger, more resilient, and more prosperous than ever before.



Perth South West Metropolitan Alliance

11 Stidworthy Way, Kwinana Town Centre WA 6167
PO Box 21, Kwinana WA 6966

Email: director@perthsouthwest.com.au

www.perthsouthwest.com.au